

EMERGENCY PLAN

For Each Hire

- A "Responsible Person" must be nominated
- The Responsible person has responsibility for the implementation of this plan and any other measures they feel appropriate.

At Commencement of Hire

- The Responsible Person must make themselves known to any other Hirer using the Hall and agree procedures in the event of an emergency – the Caretaker has details of all hirers.
- Ensure familiarity with layout of building, emergency exits etc.
- Ensure all emergency exits are unlocked and unobstructed
- Ensure familiarity with fire detection sounder location
- Ensure Fire Exit signs are switched on (switch adjacent to each sign)

Fire

At visual indication or notification from fire detection equipment:

- Stop any performance or activity (cease all music)
- Calmly advise all personnel to leave by the nearest exit and go to the fire assembly point (Edge of car park opposite main entrance).
- Ensure any visually, audibly or mobility impaired people receive the necessary assistance to evacuate.
- Check hall to ensure everyone is clear.
- Call the Fire Service (Location is Newick Village Hall on the A272 - Post Code BN8 4LE)
- Advise the fire service of the location of the fire and confirm all people are out of building
- Use fire extinguishers only if you are competent to do so and you do not place yourself in any danger
- Do not allow anyone to return to the building until advised by the Fire Service.

EMERGENCY PLAN

- Advise the Caretaker (Peter Howes) of the emergency (07972 636460)
- If the Caretaker does not answer ring Tony Bailey on 07970 555593 or Mike Berry on 07530139818

Any Other Emergency

- Evacuate hall as detailed above and call the emergency services as applicable.

Hall Plan

Newick Village Hall

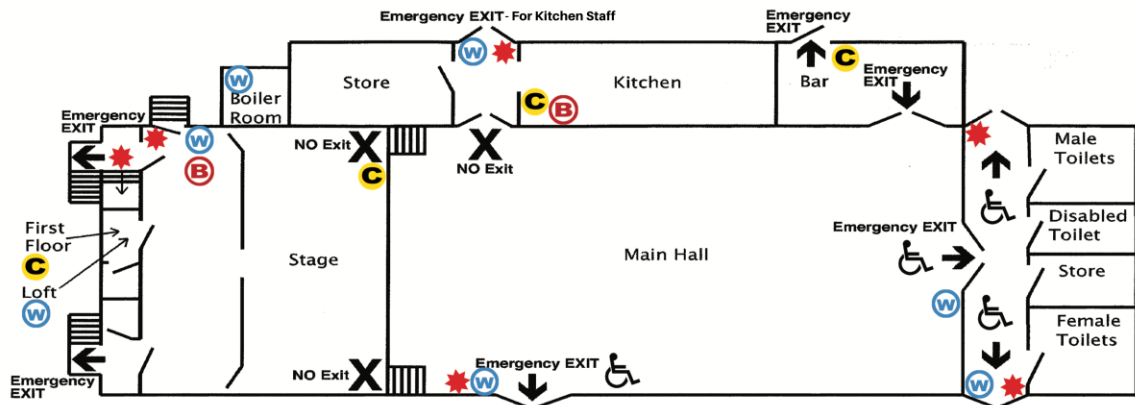


Diagram Key

- (B) Fire Blanket
- (W) Water Extinguisher
- (C) CO2 Extinguisher
- ★ Alarm Call Point

Emergency Escape Plan